

# Steel Chimney Adapter SCA

## Description

The SCA steel chimney adapter is used when installing the RSV /RS chimney fan or GSV pizza oven fan on the top of a single, double or triple wall steel chimney.

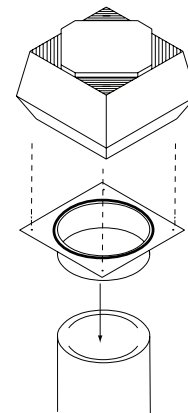
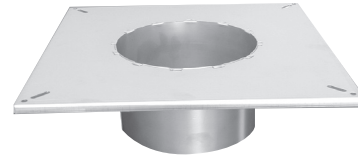
The adapter is designed to slide into the steel chimney for a tight fit. The outer diameter of the collar is 1/8" smaller than the inner diameter of the steel chimney, and has a 5" deep collar.

## Material

The steel chimney adapter is made of 16GA, 304 stainless steel.

## Warranty

2-year factory warranty



## Specifications

Fan Type	Flange Dimension	VENT Diameter									
		4"	5"	6"	7"	8"	10"				
RSV 009, GSV 009	9.4" x 9.4" (240 x 240 mm)	FR1004	FR1005	FR1006	FR1007	FR1008	*FR1010				
		4"	5"	6"	7"	8"	9"	10"	12"		
RSV 012, GSV 012, RSV 200, GSV 200, RS 009	12.2" x 12.2" (310 x 310 mm)	FR2004	FR2005	FR2006	FR2007	FR2008	FR2009	FR2010	*FR2012		
		5"	6"	7"	8"	9"	10"	12"	14"	16"	18
RSV 014, GSV 014, RSV 250, GSV 250, RS 012, RS 014,	15.6" x 15.6" (395 x 395 mm)	FR3005	FR3006	FR3007	FR3008	FR3009	FR3010	FR3012	FR3014	*FR3016	*FR3018
		8	10"	12"	14"	16"	18"	20"	22"	24"	26"
RSV 016, GSV 016 RSV 315, GSV 315, RSV 400, GSV 400, RSV 450, GSV 450, RS 016	19.7" x 19.7" (500 x 500 mm)	FR4018	FR4010	FR4012	FR4014	FR4016	FR4018				
	22.1" x 22.1" (562 x 562 mm)							FR4020			
	24.5" x 24.5" (622 x 622 mm)								FR4022		
	26.5" x 26.5" (673 x 673 mm)									FR4024	
	28.3" x 28.3" (718 x 718 mm)										FR4026

\*SCA has an over-sized flange

Specifications are subject to change without notice.

ENERVEX Inc.  
1200 Northmeadow Pkwy.  
Suite 180  
Roswell, GA 30076

P: 770.587.3238  
F: 770.587.4731  
T: 800.255.2923  
info@enervex.com  
www.enervex.com

**ENERVEX**<sup>®</sup>  
VENTING DESIGN SOLUTIONS

